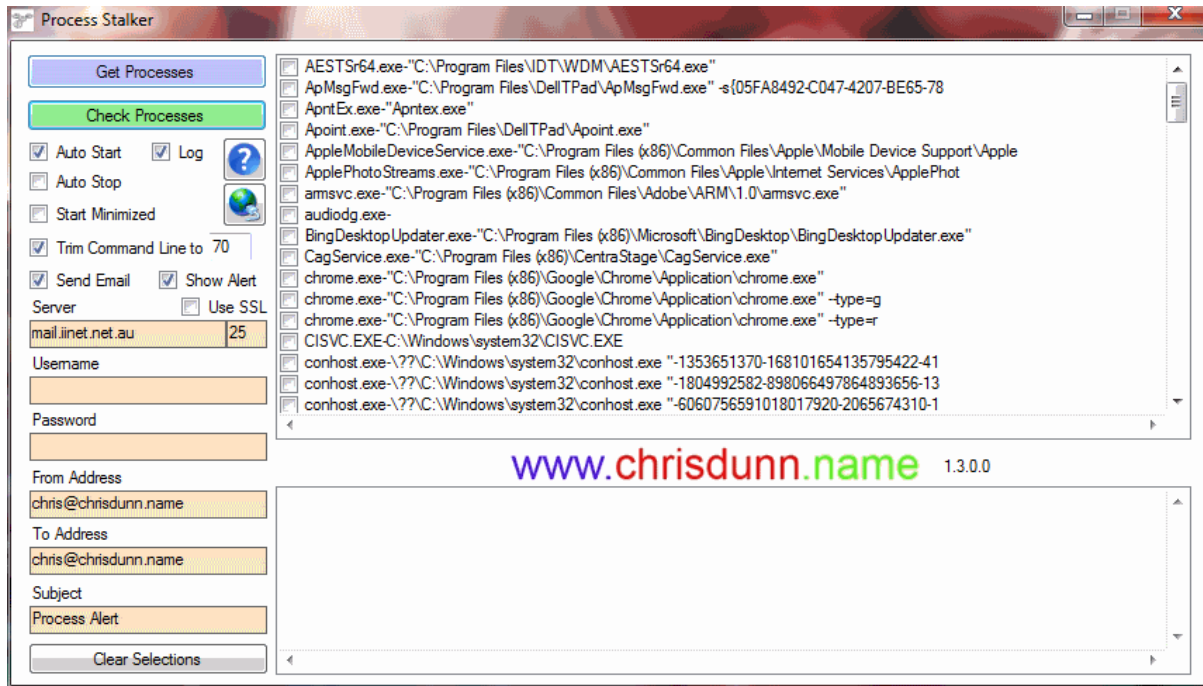


Process Stalker



Process Stalker is a process monitoring tool. It can be used to track any windows processes running on a computer or server. This can be run manually to confirm required processes are running or can be configured to send email notifications to alert when a process has stopped.

The FREE version includes limited features.



Process Stalker is easy to use with all features displayed in one interface.

Getting Started

1. Click *Get Processes* to find all processes on the local machine.
2. Select the processes you wish to monitor.
3. Specify any options.
4. Click *Check Running Processes* to identify if any selected processes are no longer running.

Monitors

- No processes selected
- Processes not running
- Processes with changed command line parameters
- Processes containing specified parsing string

Features

- *AutoStart* will automatically list processes and then check these processes as soon as the program starts. This is ideal for automatic scheduling.
- *AutoStop* will close the program 30 seconds after a process check is complete. This is ideal for automatic scheduling.
- *Log* will generate a CSV file with the alert information any time an event occurs.
- *Start Minimized* will run the program minimized in the taskbar.
- *Trim Command Line To* will truncate command lines at the specified length
- *Show Alert* will send a popup alert to all users on the current machine (on XP requires Messenger service to be enabled).

Process Stalker

- *Send Email* will send an email to the specified email address when a process is not running or no processes are selected.
 - *Use SSL* specified secure email transmission.
 - *Email Server* specifies the server used to send email.
 - *Username* and *Password* are optional and can be used if your email server requires authentication.
 - *From Address* is the address email will come from.
 - *To Address* is the address email will be sent to.
 - *Subject* allows a custom subject to be specified for the email.
 - You can use "<computer>" in the email subject and the computer name will be inserted when sent.
- *Clear Selections* will remove all selected/saved processes.
- Settings are saved in an ini file that is automatically created in the same folder as the executable.

INI File

- **Trim={True | False}** Enables feature to Trim process command line.
- **TrimLength={number}** Specifies length to trim command line.
- **Parser={True | False}** Enables parsing of process command line.
- **ParseString={string}** String to check exists in command line for any instances of selected process name (trim still applies).
- **AutoStart={True | False}** Automatically runs a check when application starts.
- **AutoStop={True | False}** Automatically closes application after running a check or after 15 seconds.
- **Minimised={True | False}** Starts application minimised.
- **SendEmail={True | False}** Sends an email when an alert is triggered.
- **EmailSSL={True | False}** Use SSL for sending email.
- **EmailServer={smtpserver}** Specify email server for sending email.
- **EmailPort={port}** Specify port for sending email (Default: 25).
- **EmailUsername={username}** Specify username for sending email.
- **EmailPassword={password}** Specify password for sending email.
- **EmailTo={email}** Specify recipient address for alert emails.
- **EmailFrom={email}** Specify sender address for alert emails.
- **EmailSubject={subject}** Specify email subject(can include variable).
- **AlertToFile={FilePath}** Specify target location to generate HTML alert notification if alert is triggered (can include variable).
- **TargetMachine={computer | ip}** Specify target machine for monitoring.
- **Execute={FilePath}** Specify application to execute if alert is triggered.
- **Log={True | False}** Creates a log file and records triggered alerts.
- **SendAlert={True | False}** Shows a popup message on the current machine if an alert is triggered.
- **AlertIfRunning={True | False}** Triggers alert when process is running instead of stopped.

Command Line Parameters

- **/INI={FilePath}** Specifies ini file to use for settings (Default: application-path\application-name.ini).
- **/LogFile={FilePath}** Specifies file to save log file if enabled (Default: application-path\application-name.csv).
- **/AutoStart={True | False}** Automatically runs a check when application starts.
- **/AutoStop={True | False}** Automatically closes application after running a check or after 15 seconds.
- **/Minimised={True | False}** Starts application minimised.
- **/TargetMachine={computer | ip}** Specify target machine for monitoring.
- **/Execute={FilePath}** Specify application to execute if alert is triggered.
- **/Log={True | False}** Creates a log file and records triggered alerts.
- **/SendAlert={True | False}** Shows a popup message on the current machine if an alert is triggered.
- **/AlertToFile={FilePath}** Specify target location to generate HTML alert notification if alert is triggered (can include variable).
- **/Parser={True | False}** Enables parsing of process command line.
- **/ParseString={string}** String to check exists in command line for any instances of selected process name (trim still applies).
- **/AlertIfRunning={True | False}** Triggers alert when process is running instead of stopped.

Process Stalker

Installation

Process Stalker has been tested on Windows XP, 2003, Vista, 7, 8, 2008, 2012 and requires the .Net Framework 3.5 to be installed.

You can download the .NET Framework from here: <http://www.microsoft.com/en-au/download/details.aspx?id=21>

Process Stalker does not require installation. The executable can be located anywhere on your computer and settings file is automatically created in the same location when the program is run.

The configuration and log files are specific to the name of the executable. If you would like to run multiple instances of this application in the same location to monitor different criteria you can create a copy of the exe file and rename it and a new configuration and log file will be created to match the new name.

Scheduling

Process Stalker does not include scheduling capabilities but can be easily scheduled using Windows Task Scheduler. This is designed so that the program can run even if you are not logged on to the server/computer. Simply create a new scheduled task in windows and specify the option to 'run whether user is logged on or not' and remember to select *AutoStart* and *AutoStop*. The program will now run on the schedule you define.

- [Schedule a Task \(Windows 8\)](#)
- [Schedule a Task \(Windows 7\)](#)
- [Schedule a Task \(Windows XP\)](#)

Use StalkerGo to schedule multiple Stalker applications.